



Electronic System Scale Printer

# UNI-3

More accurate and faster.



# UNI-3

Versatile and vast software functionality all coupled with Ishida's quality and reliability makes the UNI-3 series a must for various retail businesses such as wholesale stores, butcher shops, green groceries and supermarkets.

The UNI-3 series provides the perfect requirements through various model variants and a fully-loaded yet easy and user-friendly software.



Receipt printing  
visible fonts



Label printing



## ACCURACY AND CONSISTENCY

Accurate weighing and repeatability is fundamental for every customer.

## HIGH QUALITY DISPLAY

Bright blue backlight and white 16-segment display or green/orange backlight LCD.

## MEMORY EXPANSION

External memory may be added via USB in case of memory expansion for PLU database and/or transaction data.

## EASY OPERATION

Simple and convenient operation to call up and program a PLU.

## HIGH SPEED LABEL AND TICKET PRINT QUALITY

Printing of labels or receipt with pre-set printing speed and thermal head darkness adjustment.

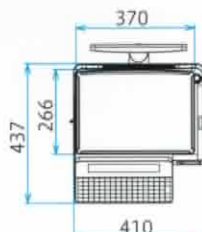
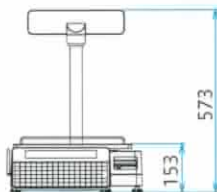
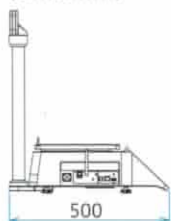
### L2 Pole type



### L1 Pole type



(unit:mm)



370

410



CUSTOMER SIDE

## L2 Bench type



CUSTOMER SIDE

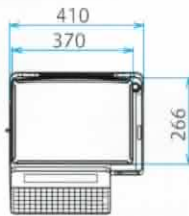
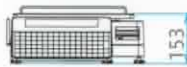
## L1 Bench type



CUSTOMER SIDE



(unit:mm)



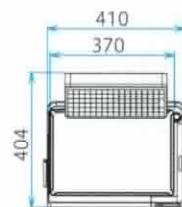
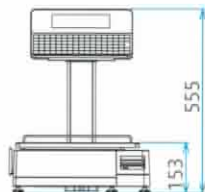
## Elevator type



CUSTOMER SIDE



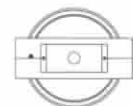
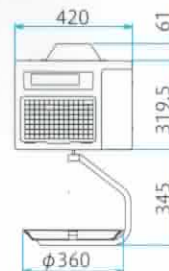
(unit:mm)



## Hanging type



(unit:mm)



## SYSTEM CONFIGURATION

SLP5 is a powerful server/client PLU management Windows based PC software. It completes the UNI-3 series and takes it to new heights. The SLP5 software, the 5th generation of the ScaleLink family software, is freely configurable to make it as simple as possible to the end-user to keep data up-to-date and synchronized on all scales in the system. Supporting mdb or SQL type databases, the GUI is by far one of the most user-friendly software in the retail scale business.



## UNI-3 L1 and UNI-3 L2

The UNI-3 model variants are available with two display types: The UNI-3 L1 models, have a blue backlite display with sharp white 16-segment display capable of showing momentarily the PLU name and swap to numeric data; The UNI-3 L2 models, come with a two-line green/orange backlite liquid crystal display, one line dot matrix alphanumeric and one line numeric only.



L2 TYPE DISPLAY



L1 TYPE DISPLAY

## SPECIFICATIONS

MODEL NAME	UNI-3 series
CAPACITY	6kg/2g, 15kg/5g (Dual range) 30kg/10g (single range)
POWER SUPPLY	AC100-240V, 50/60Hz
PRINTING SPEED	MAX 100mm/sec
LABEL SIZE	W 38 mm to 64mm L 30 mm to 175mm Printing area W 56mm.
LABEL ROLL SIZE	Outer diameter $\Phi$ 100mm or less Inner diameter $\Phi$ 40mm $\pm$ 1mm
USE CONDITIONS	Temperature: - 5 to 40°C Humidity:20 to 85% No condensation
INPUT/OUTPUT	LAN x 1 USB x 1 Drawer x 1

### ScaleLink Pro 5



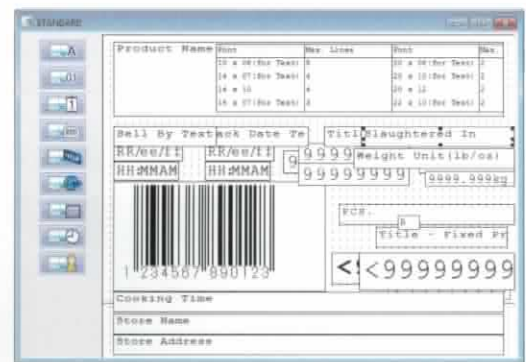
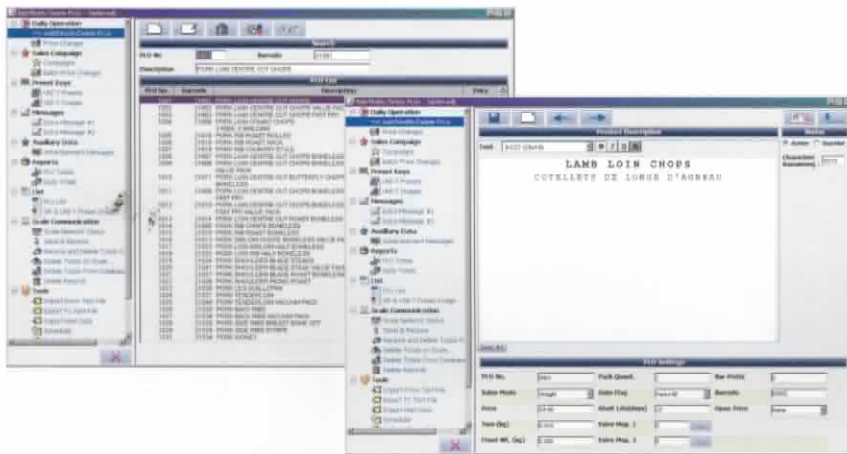
SLP-5



Maintenance Utility



Setup Utility



Please ask your local contact for working condition and licence of Scale Link Pro.



Technical specifications and design are subject to change without prior notice.



**ISHIDA CO., LTD.**

44,SANNO-CHO, SHOGOIN SAKYO-KU,  
KYOTO 606-8392 JAPAN  
Phone : 81-75-771-4141  
Facsimile : 81-75-751-1634  
URL : <http://www.ishida.co.jp>